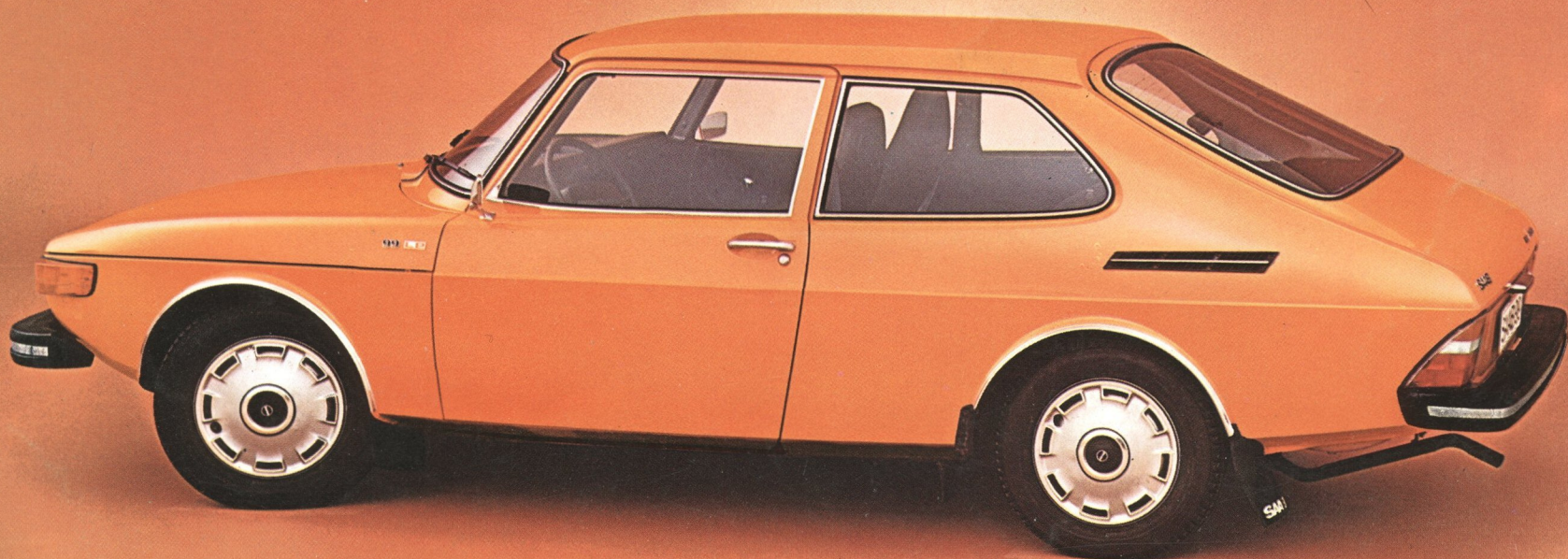




Introducing the new Saab WagonBack Sedan





With its hatchback closed, the new Saab WagonBack Sedan looks like a sleek, stylish, luxury sedan.

But with its hatchback open it reveals a luxury sedan that's part station wagon, as well. Because in the back of every WagonBack you'll find a trunk that can carry more than most other sedans in our class.

In the back of every WagonBack you'll find a rear-window shelf that can be quickly removed and a back seat that folds down flat. So you can carry things like bicycles, rugs, skis and floor lamps.

You'll find a hatchback that opens all the way down to the bumper. So it's really easy to load.

And you'll find a hatchback tailgate that swings up easily, high and safely out of the way, on small gas pistons.



And because of the aerodynamic shape of our WagonBack Sedan you'll find that the rear window tends to keep itself clean. Unlike most station wagons.

We designed and built the WagonBack to give you a lot of the advantages only a station wagon can give you. With all of the advantages only a sedan can give you.





Sometimes it's a Station Wagon. Sometimes it's a Sedan.

The new Saab WagonBack Sedan. Is a sedan when you want it to be a sedan. But just open the WagonBack, take out the removable rear-window shelf, fold down the rear seat, and it becomes a station wagon. With more than 53 cubic feet of cargo space. And more than 6 feet of floor length for carrying things like skis, bicycles, rugs and floor lamps.

But even with the rear-window shelf in, and three people in the back seat, our WagonBack will still give you more trunk space than you'll find in most

other sedans in our class. 21 cubic feet, to be exact.

And lots of luxury. Because our Saab WagonBack has the same spacious head and leg room up front and back as our other Saab 99's.

Our WagonBack also gives you all of the practical features that have

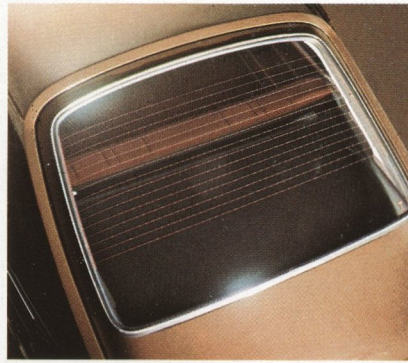
made Saab one of the most sensible cars on the road. Because like our other Saab sedans, it's built with the traction of front-wheel drive, the precision of rack and pinion steering, the strength and safety of roll-cage construction, and the assurance of power-assisted disc brakes on all four wheels.

Our new WagonBack offers you what almost no other car in the world offers you: A sedan that converts to a station wagon when you need it, and a station wagon that converts to a luxury sedan when you want it.



import motors inc.
Sales · Parts · Service
1685 Mentor Ave. Ph: 352-9625
Painesville, Ohio 44077

Defroster outlets are located on each side of the wide rear window to spread the air over the entire surface. And for even quicker defrosting, and to prevent misting, the Saab WagonBack also offers electrical defrosting as a back-up system.



The front grill of the WagonBack has been specially designed to complement the shape of the car. It gives the WagonBack a distinctiveness unto itself.

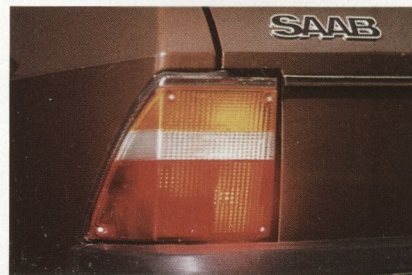


The door panels in the WagonBack are of the same type as those used in the Saab EMS: moulded in one piece of impact-absorbing material. Together with built-in, sturdy door beams, our new door panels offer excellent side impact protection.



The Saab WagonBack offers the same spacious interior areas for both driver and passengers as every Saab sedan, as well as the same good riding comfort. Yet our WagonBack also offers some very distinctive and practical station wagon characteristics.

The interior is well appointed and elegant. The upholstery material in the seats and backrests is a soft, pleasant nylon velour that won't stick to your skin in summer or freeze you in winter. And interiors are fully color-coordinated, of course.



The tail lights have been designed to be clearly visible, even from the sides. The back-up lights direct their beams both backward and downward to make backing up easier and safer at night. The license plate light, incidentally, is built into the tailgate handle.

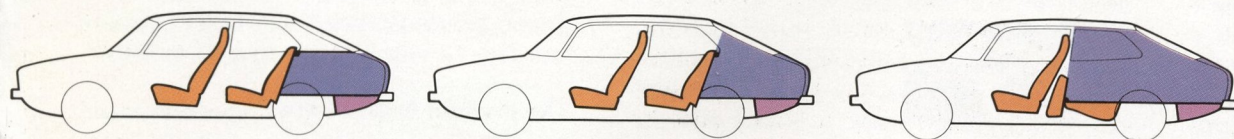


The gas tank filler cap is located on the right side of the car and as with all Saab 99's the tank is located in the safest position – between the rear wheels. The tank volume has been increased to 14½ gallons on the Saab WagonBack to give you a greater driving range.



The luggage space has been designed for both function and elegance. The flat floor is covered entirely with vinyl reinforced textile carpeting. And the sides, like the insides of the front doors, are panelled with impact-absorbing materials covered with sturdy vinyl.

The spare tire is placed vertically on the left of the luggage compartment. To the right is the luggage compartment light. The flow-through ventilation system vents stale air through the round outlets quickly and quietly.



The roof line has been left the same as in other Saab 99's. But the body to the rear of the center pillar has been redesigned. The rear side windows have been enlarged, as well.



The WagonBack regular large luggage compartment has a capacity of 11½ cubic feet (measured according to SAE standards). An additional space under a covering far back in the luggage compartment adds a maximum volume of 3 cubic feet so even with the rear-window shelf left in you still have more luggage space than most other cars in our class.

The removable shelf is mounted on two tracks – one on each side – and can be easily and quickly taken out. At the rear of the backrest, flush with the shelf, is a beam that conceals the lock mechanism for the seat backrest. It also functions as a point of attachment for special removable headrests (optional).

When you have to carry long and bulky items, simply fold the rear seat forward, and the backrest down flat, to give you additional load area which is over 6 ft long.

Interior dimensions

| | |
|--|-------|
| Max. length of loading deck | 72.4" |
| Width of loading deck, behind the wheel wells | 41.3" |
| Width of loading deck, between the wheel wells | 39.8" |
| Width of loading deck, in front of the wheels | 51.2" |

| | |
|---|-------|
| Loading deck to roof, max. dimension | 36.2" |
| Height of tailgate opening, vertical | 31.7" |
| Length of ordinary luggage compartment (rear seat up) | 46.8" |
| Distance between the upper edge of the rear seat backrest to the tailgate | 24.4" |
| Max. width of tailgate opening | 46.0" |
| Min. width of tailgate opening | 37.4" |

Technical data and general description.

Of course the new Saab WagonBack Sedan has its own unique profile. But technically it is practically identical with other Saab 99 LE models.

Since 1970, Saab has introduced many major innovations in its cars. Innovations that have been world-wide firsts in automotive design: Impact absorbing bumpers and an automatically heated driver's seat, to mention just two. These are innovations developed by a small but technically highly skilled group of automotive engineers with the ability to look forward and work outside conventional realms.

Coupled with the basic features of Saab cars, these recent innovations have greatly added to Saab's world-wide reputation of durability, comfort, safety and economy.

The driver's seat — a master piece in comfort and safety.

The driver's seat in all Saab 99 models, including the WagonBack Sedan, has been redesigned for 1974 to provide excellent seating comfort and support. The backrest is now shaped to follow the contours of the body more closely. It includes an elastic lumbar support and a built-in head restraint, which helps prevent whiplash in the event of an accident.

Beneath the upholstery is a fine mesh of well insulated electric wiring. If the seat temperature is below 57° and the ignition is switched on, the seat and the lower section of the backrest are quickly and comfortably heated like an electric blanket. A thermostat automatically switches off the heating elements once the seat temperature reaches 82°.

The seat cushion can be adjusted both up and down and at different angles, as well as, of course, fore and aft, to fit any driver comfortably.

Our famous impact-absorbing bumpers.

The impact-absorbing bumpers protect the car in the event of minor bumps. Impacts of up to 5 m.p.h. are absorbed by cellular plastic blocks contained inside the rubber-covered bumper. After being compressed, the blocks will return to their orig-

inal shape. So our bumpers not only keep our car looking new, they also keep themselves looking new.

Moulded fiberglass roof lining.

The WagonBack has a moulded fiberglass headliner, covered with fire resistant nylon-velour. It provides insulation against cold, heat, noise and has a shock-absorbing function, as well.



Visibility and instrumentation.

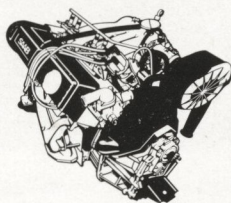
Good visibility and easy-to-read instruments, deeply recessed into the instrument panel to prevent reflections, give the driver all the information he may need at a glance. The controls are conveniently placed and easy to reach, even with the seat belts fastened.

A heating and ventilation system worthy of its name.

The Saab WagonBack has an efficient system for heating and ventilation: Fresh air outlets at the center and extremities of the dashboard (with controls for the air flow and direction), warm air outlets at the floor and in the leg space of the back seat, high capacity defroster nozzles for the windscreen, the front side windows and the rear window, and also an electrically heated rear window for defrosting.

Electronically controlled fuel-injected 2-liter engine.

The engine of the Saab WagonBack is equipped with an electronically controlled fuel-injection system and develops a maximum of 110 hp (SAE net) at 5500 rpm. Our economical 2-liter engine, built by Saab in Sweden, is a water-cooled four-cylinder in-line engine with an overhead camshaft.



Engine specifications

| | |
|--------------------------------|-------------------------------------|
| Bore | 3.54 in |
| Stroke | 3.07 in |
| Cylinder volume | 121.1 cu. in. (1985 cc) |
| Max. horsepower (SAE net) | 110 hp at 5500 rpm |
| Torque | 123 lb. ft. at 3700 rpm |
| Compression ratio | 8.7:1 |
| Injection system | Bosch, electronically controlled |
| Recommended fuel | Regular, minimum 91 Research octane |
| Capacity of the cooling system | 10 U.S. quarts |
| Max. charging current | 55 A |

The cylinders are inclined 45° to the right. The crankshaft and camshaft are of five-bearing design. The engine is equipped with pressure lubrication, oil filter of full-flow type, closed-circuit crankcase ventilation, cross-flow radiator with a separate expansion tank and an electrically driven, thermostatically controlled cooling fan. The 12 volt battery is rated at 60 Ah.

The manual 4-speed gearbox.

Power is transmitted from a single dry plate clutch to the gearbox through a primary gear train (1:0). The fully synchronized gearbox is designed for front-wheel drive and located beneath the engine where it forms a unit with the final drive differential and the internal universal joints.



The 3-speed automatic transmission.

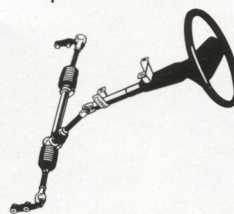
Power is transmitted from the engine through a hydraulic torque converter, the ratio of which varies between 1.91:1 and 1:1. A chain drive transmits the engine output from the torque converter to the smooth 3-speed Borg-Warner automatic gearbox.



Rack and pinion steering.

Rack and pinion steering is just about the simplest most direct steering system you can find. The steering box is oil-filled, and for safety reasons, located in the back of the engine compartment. The steering column is telescopic and provided with an universal joint for added safety in case of impact.

The turning radius is 17 feet and the number of steering wheel turns from lock to lock is 3.7.

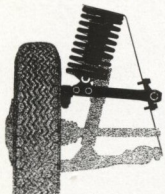


Disc brakes on every wheel.

All Saab sedans have power-assisted and self-adjusting disc brakes on all four wheels. The hydraulic system is diagonally divided into two independent braking circuits. The total brake area is 358 sq. in. The handbrake, acting as a third brake system, acts mechanically on separate drums on the front wheels.

Suspension.

The independent front suspension consists of rubber-mounted transverse wishbones and high placed, pivoted coil springs.



Owing to the pivot mounting, the springs are always straight. The rear axle is rigid and entirely free from heavy power transmission components. It is

guided longitudinally by two leading and two trailing arms, and transversely by a Panhard rod. Double-acting telescopic shock absorbers are fitted all around.

Priming, painting and protecting.

The body is primed in accordance with the electrophoresis method. This means that the body is lowered into a bath of primer paint, which is induced into all recesses by a heavy electric current to penetrate and adhere to all metal surfaces. To provide further corrosion protection a special anticorrosion oil is sprayed into the doors, the sill beams and other closed sections. The oil treatment comprises about 30 points on the body plus the underside of the car, where the oil also penetrates through the undercoating.

Wheels.

The Saab WagonBack is equipped with steel disc wheels with rim size $4\frac{1}{2} \times 15$ " and steel belted radial ply tires. Size: 165 SR \times 15".

Unitized body with roll-cage construction.

Our welded, unitized construction body has high torsional rigidity. The windshield pillars consist of heavy steel beams more than 3 feet long, welded at the wheel arches. The sill beams and side pillars are also exceptionally strong. And additional protective beams are welded into the doors. A reinforcing steel rail runs around the edge of the roof. The front and rear sections of the car are designed as energy-absorbing deformation zones which are designed to collapse upon impact, protecting anyone inside.

Dimensions

| | |
|--------------------------|--------|
| Overall length | 178.3" |
| Overall width | 66.5" |
| Height unladen | 56.7" |
| Wheelbase | 97.4" |
| Track rear | 54.7" |
| Track front | 55.1" |
| Effective headroom front | 38.4" |
| Effective headroom rear | 37.7" |
| Elbowroom rear | 60.6" |

Extensive standard equipment.

Besides the standard equipment mentioned elsewhere in this brochure the Saab 99 WagonBack Sedan has more details worth mentioning:

Clock

Cigarette lighter

Parking brake and low pedal warning light

Anti-glare interior rear view mirror

Spacious pockets inside the front doors

Towing lugs both front and rear

Deep-curved windshield of laminated tinted glass

Reflectors on the edges of the doors on the driver's side

Four-corner flasher warning system

The manufacturer reserves the right to change specifications and equipment without notice.

Distributed in U.S.A. by Saab-Scania of America Inc., Orange, Conn., Jacksonville, Fla., Torrance, Calif., Arlington, Tex., Chicago, Ill.



| Weights | Fuel injected engine | Fuel injected engine |
|-----------------------------|----------------------|------------------------|
| | Manual transmission | Automatic transmission |
| Curb weights | 2670 lb | 2710 lb |
| Max. loaded vehicle weights | 3720 lb | 3720 lb |

SAAB-SCANIA

Saab Car Division • Nyköping, Sweden



import motors inc.
Sales - Parts - Service
1685 Mentor Ave. Ph: 352-9625
Painesville, Ohio 44077